

ALLIANZ ARISTON

4400 BHP Subsea Support Vessel - DPS 1 - 4 Pt Mooring - FiFi 1



PRINCIPAL PARTICULARS

Year Built	:	2012, China
Call Sign	:	J8B4764
IMO No	:	9636929
Official No.	:	11237
Class	:	ABS+A1 E *Offshore Support Vessel, Fire Fighting Class 1 + AMS+ DPS 1,
Flag	:	St. Vincent & The Grenadines
GRT /NRT	:	1671 / 501

DIMENSIONS

Length Overall	:	59.25m
Length Waterline	:	56.00 m
Breadth Moulded	:	15.00m
Depth Moulded	:	6.10m
Draft	:	4.60m

CARGO CAPACITIES

Deadweight	:	1450 mt
Deck Cargo	:	500 mt
Deck Area	:	350 m ²
Deck Strength	:	7t/m ²
Fuel Oil	:	880 m ³
Fresh Water	:	400 m ³
Water Ballast/Drill Water	:	1000 m ³
Dispersant	:	13 m ³
Foam	:	13 m ³
Freezer	:	10 m ³
Cooler	:	10 m ³

DISCHARGE CAPACITIES

Fuel Oil	:	1 x 150 m ³ /hr @ 60m head
Fresh Water	:	1 x 100 m ³ /hr @ 75m head
Drill Water	:	1 x 100 m ³ /hr @ 75m head
Bilge/Ballast	:	2 x 75 m ³ /hr @ 40m head

MACHINERY

Main Engines	:	2 x 2200 BHP Wartsila 8L20
Main Generators	:	3 x 350 kW Diesel Driven, 415V/3Ph/50Hz
Emergency Generator	:	1 x 80kw
Propellers	:	2 x Azimuth Thruster Controllable Propeller Wartsila LIPS CS 225-S/WN - K
Rudders	:	Z Propeller
Bow Thruster	:	1 x 350 KW, 5 T Thrust
Steering Gear	:	Wartsila Z - Peller

SPEED

Max. Speed	:	12.0 knots
Economical Speed	:	10.0 knots
Type of Fuel	:	Marine Gas Oil
Consumption	:	Economy: Approx 8T / 24 hrs @ 100% MCR Maximum: Approx 14T / 24 hrs @ 100% MCR

ACCOMMODATION

1 men Cabins	:	4 cabins
2 men Cabins	:	5 cabins
4 men Cabins	:	9 cabins
Total	:	50 men cabins
Hospital	:	1 bed

All cabins fully air-conditioned with en suite wash rooms.

DECK & AUX. EQUIPMENT

Anchor	:	2 x 1575kg HHP anchors
Chain	:	440 m (L) x 40mm dia U2 chains
Anchor Windlass	:	1 x 8 ton/12m/min
Winch Rating	:	9mt @ 12m/min for 36mm dia chains
Capstan	:	2 x 5mt @ 15m/min electro hydraulic
Deck Crane	:	JIANJU HAITAI SHIP'S WHOLE SET CO., LTD SWL: 10T @20 m radius, 22T @3.5m radius
4 Pt Mooring	:	4 x 30 Ton max on 1 st Layer 60 T max holding power Capacity 1000 m x 32 mm dia wire Anchor 4 x 3 Ton HHP

RADIO & NAVIGATION EQUIPMENT

GMDSS: Area 3	:	
1 x SSB	:	
2 x Inmarsat C	:	
2 x VHF	:	
1 x Navtex Receiver	:	
2 x SART	:	
1 x EPIRB	:	
3 x VHF Portable radios	:	
2 x Radar	:	
1 x Echosounder	:	
1 x DGPS	:	
1 x Gyrocompass	:	
1 x Autopilot	:	
1 x Magnetic Compass	:	
1 x Weather Fax Receiver	:	
1 x Speedlog	:	
1 x Wind Indicator	:	
1 x AIS	:	
1 x PA/Talkback System	:	
1 x Kongsberg Joystick Control	:	
1 x Self Powered Telephone	:	
DP-1 - Kongsberg	:	

FIRE FIGHTING & ANTI POLLUTION EQUIPMENT

FIFI System	:	Class 1
Pump	:	2 x 1500 cbm/hr @ 14 bar
Monitors	:	2 x 1200 cbm/hr @ 12 bar (with remote control) One monitor fitted with double barrel for foam discharge
1 x Water Spray Curtain round the Hull & Deckhouse	:	
Engine room water spray system	:	Seaplus, South Korea

Fire Extinguishing System

Engine Room CO2 system	:	
12 x fire hydrants and fire extinguishers as Class requirements	:	
2 x fireman outfits	:	
4 x fire blankets for engine room and galley	:	
1 x BA recharging compressor of 75 ltr/min @ 200 bar	:	

Life Saving

6 x 25 men Inflatable Life rafts	:	
8 x Lifebuoys	:	
60 x Lifejackets	:	
1 x Rigid Inflatable Rescue Boat for 6 persons (with outboard motor)	:	

AUXILIARY EQUIPMENT

1 x Sewage Treatment Plant suitable for 50 men	:	
1 x 10T/day Reverse Osmosis Fresh Water Maker	:	
1 x Oily Bilge Water Separator	:	
1 x FRC 15 man with diesel inboard engine clw launch recovery davit	:	



Allianz Marine Services LLC

Post Box 233926 , Dubai,

United Arab Emirates

+971-4-3584388

+971-4-3584389

info@allianzmarine.ae

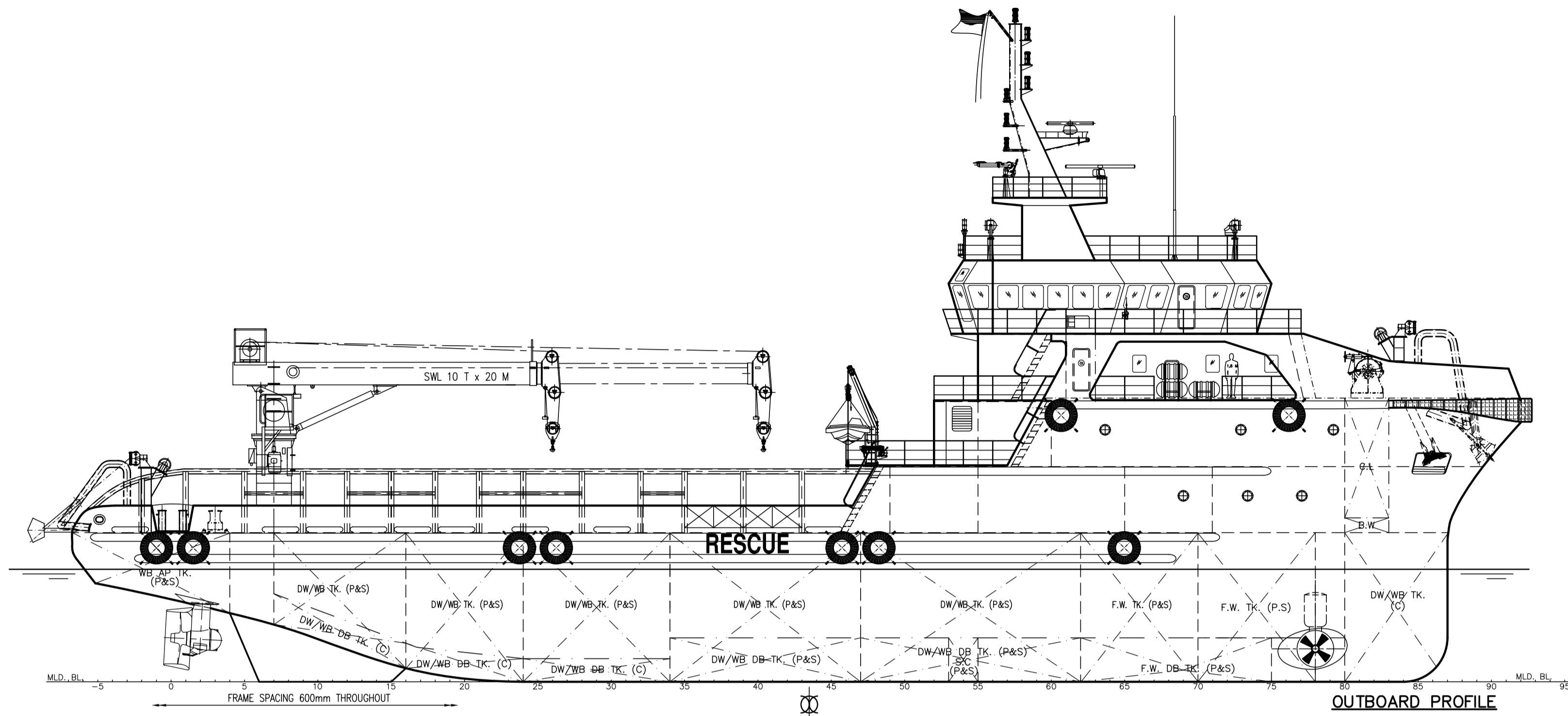
www.allianzmarine.ae

DUBAI

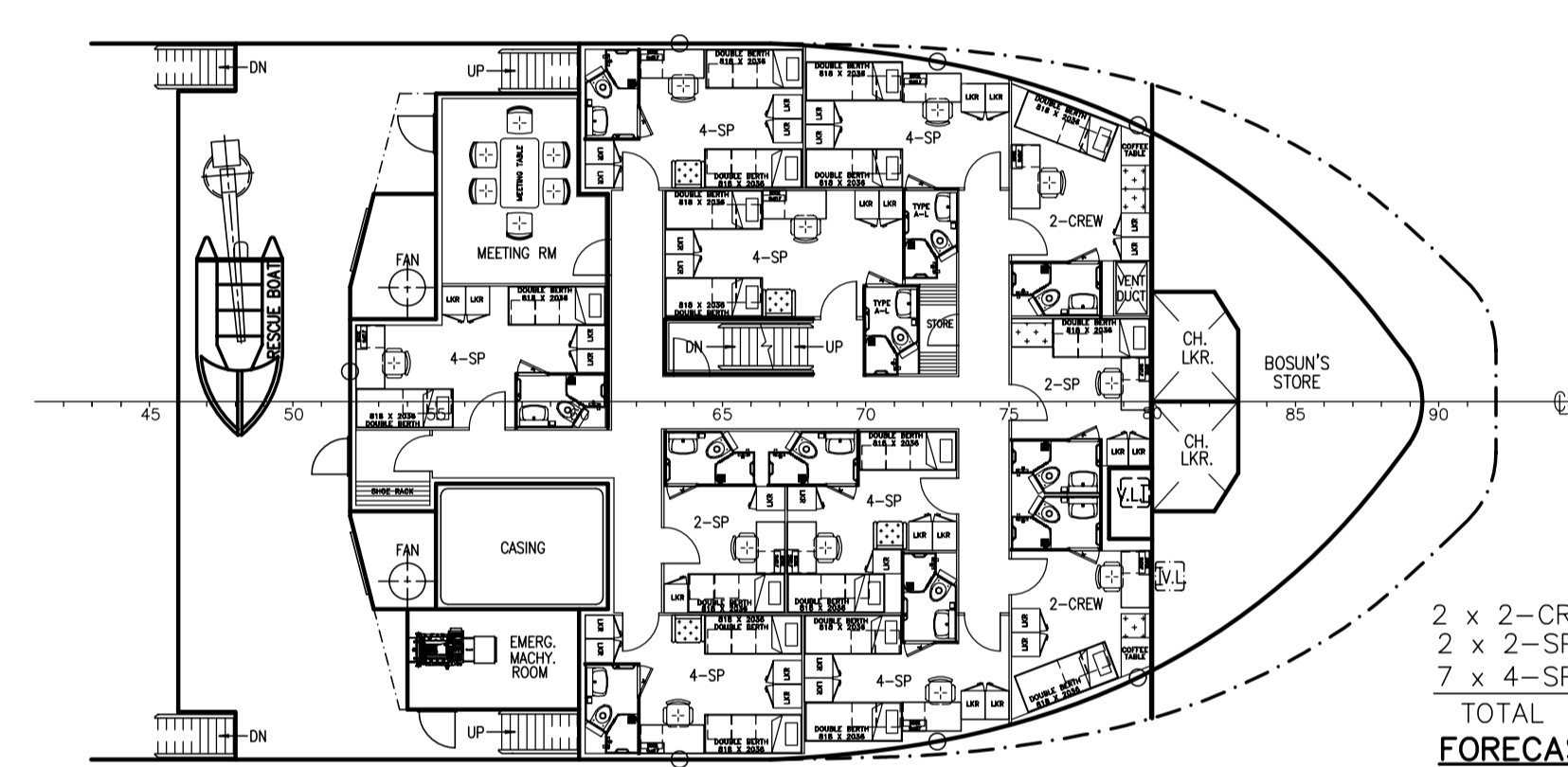
ABU DHABI

QATAR

SINGAPORE

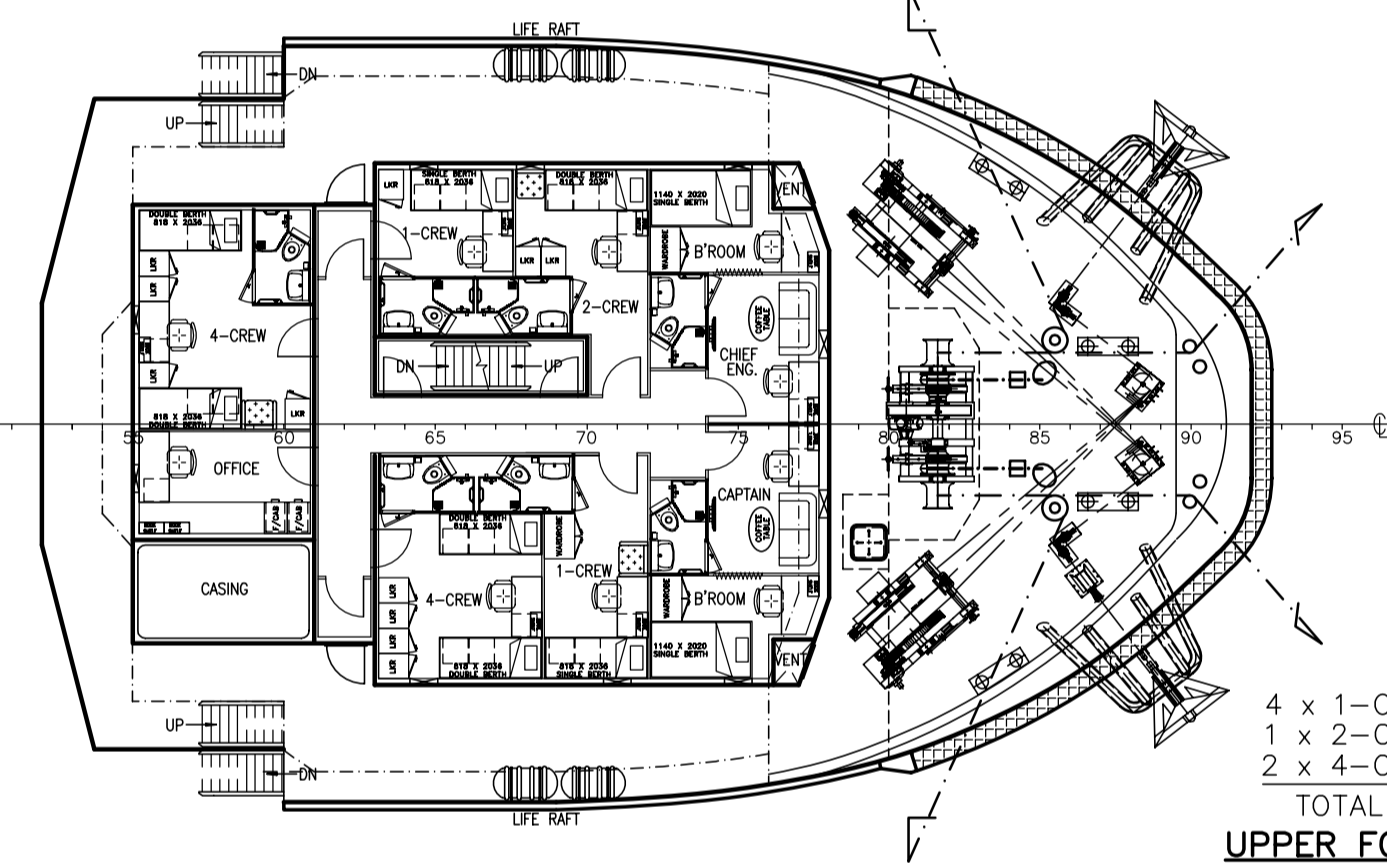


OUTBOARD PROFILE



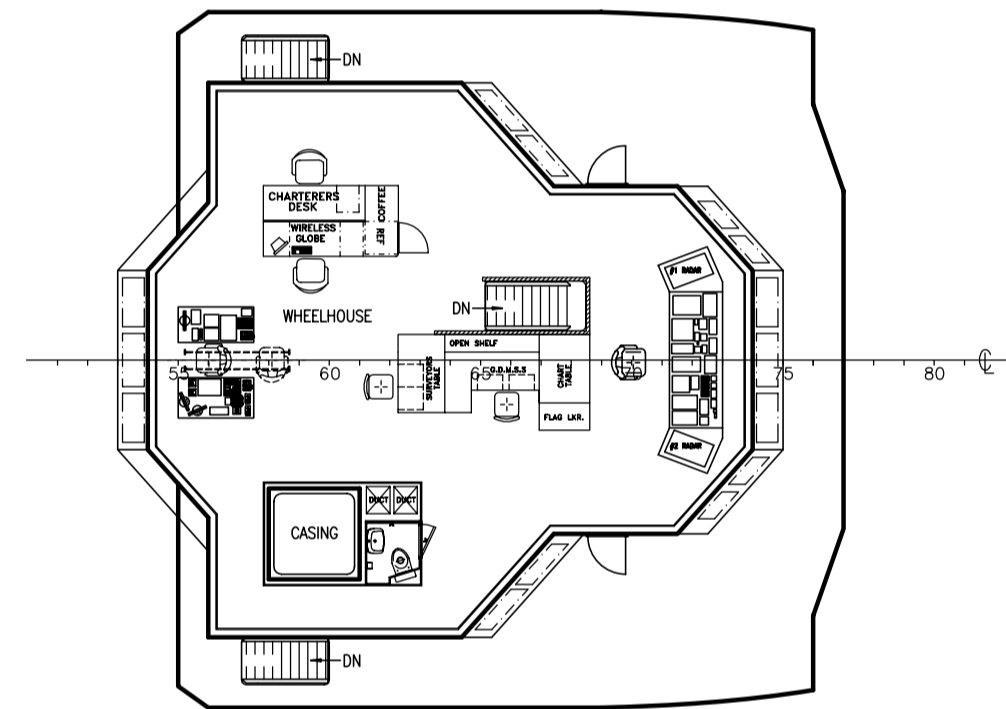
2 x 2-CREW = 4 MEN
 2 x 2-SP = 4 MEN
 7 x 4-SP = 28 MEN
 TOTAL = 36 MEN

FORECASTLE DECK

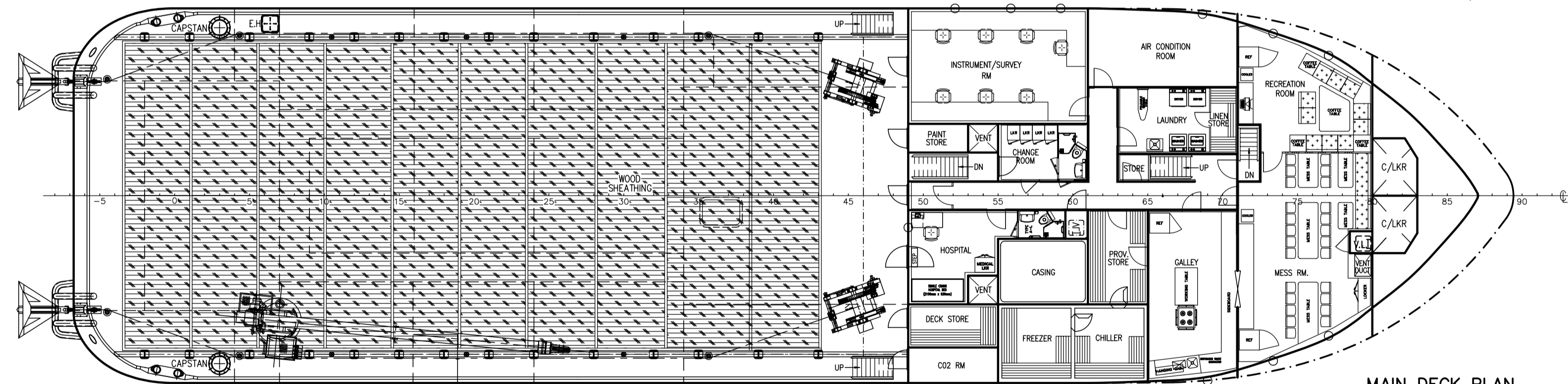


4 x 1-CREW = 4 MEN
 1 x 2-CREW = 2 MEN
 2 x 4-CREW = 8 MEN
 TOTAL = 14 MEN

UPPER FORECASTLE DECK



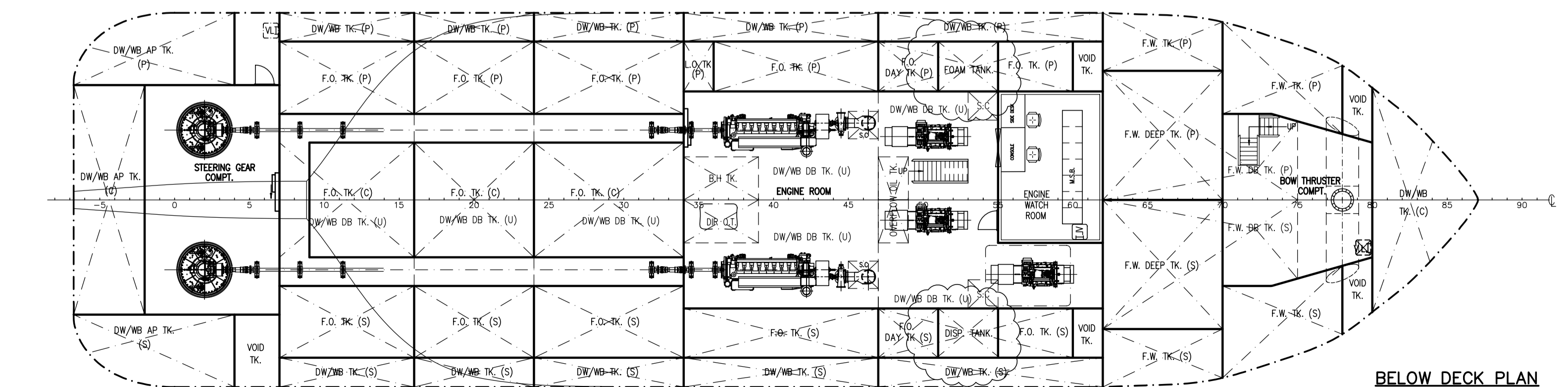
BRIDGE DECK PLAN



MAIN DECK PLAN

PRINCIPAL DIMENSIONS

LENGTH (O.A.)	59.250 M
LENGTH (W.L.)	56.000 M
LENGTH (B.P.)	52.200 M
BEAM (M.L.D.)	15.000 M
DEPTH (M.L.D.)	6.100 M
DESIGN DRAFT	4.600 M
FUEL OIL	880 M ³
FRESH WATER	400 M ³
DRILL WATER / W.B.	1000 M ³
CLEAR DECK AREA	350 M ²
DECK CARGO (DECK LOADING = 7T/M ²)	500 TONS
MAIN PROPULSION ENGINE	2 x 1600 KW
SPEED (TRIALS)	12.5 KNOTS
COMPLEMENT	50 MEN
CREW	18 MEN
SPECIAL PERSONALE	32 MEN



BELOW DECK PLAN

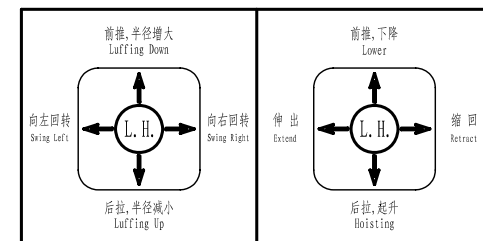
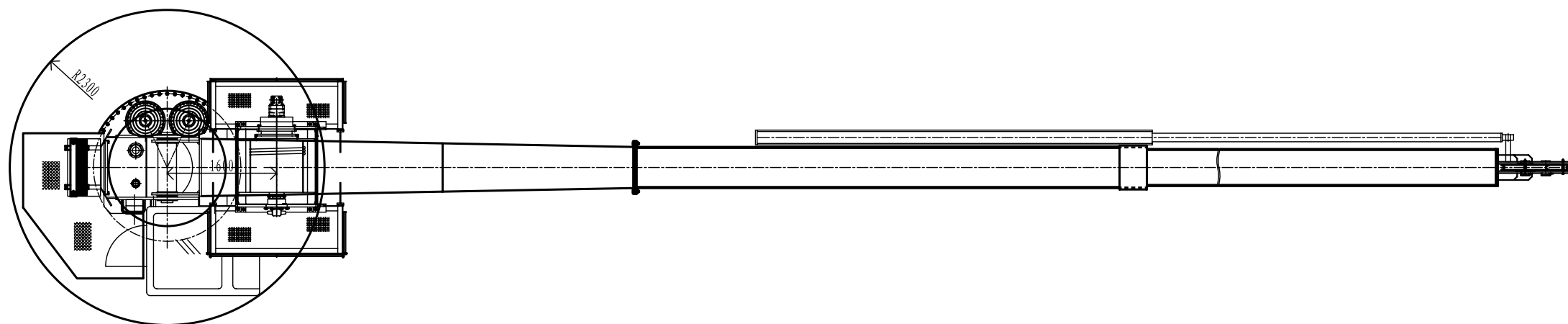
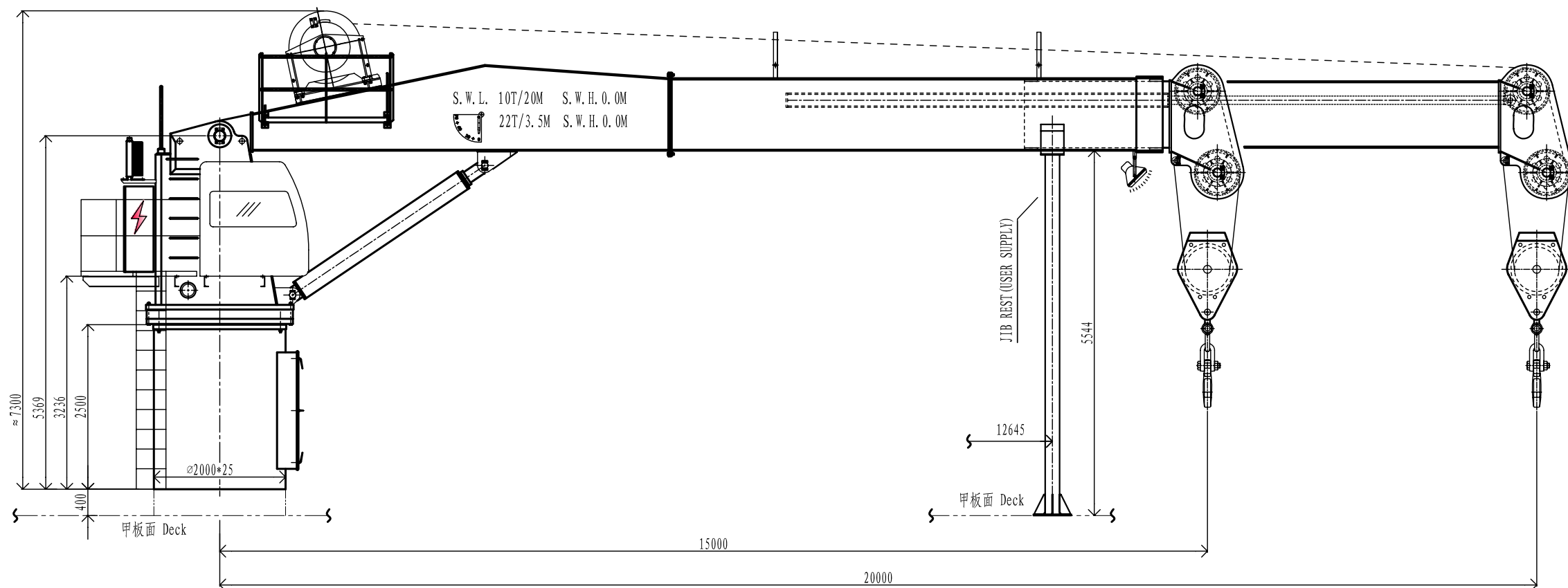
4.	FOAM & DISP. TANK ARE ADDED	AG/0Y	27.12.10
3.	CHANGE THE POWER OF M.E TO 2X1600KW	XIEJIN	15.12.10
2.	CANCEL ESCAPE TRUNK OF ENGINE ROOM	XIEJIN	14.12.10
1.	AMEND THE SHAFT TUNNEL	XIEJIN	02.12.10
ITEM	DETAILS OF MODIFICATION	BY	DATE
CONSULTANT			
 KHIAM CHUAN MARINE PTE LTD 15, HILLVIEW TERRACE, SINGAPORE 669226 TEL: 67753383 (6 LINES) FAX: 67753788 EMAIL: khiamchuan@kcm.com.sg			
PROJECT			
60m SUBSEA SUPPORT VESSEL			
TITLE			
GENERAL ARRANGEMENT			
CLASSIFICATION		HULL NO. CMC0893/CMC0894	
DRAWN	CHECKED	SCALE	DRAWING NUMBER
YUMINGYE		1:150	KCM/Q630(A)-G1
27-10-10			4

THIS DOCUMENT AND THE INFORMATION IT CONTAIN IS COPYRIGHT AND REMAINS THE PROPERTY OF KHIAM CHUAN MARINE PTE LTD. IT IS NOT TO BE COPIED IN WHOLE OR IN PART OR DISCLOSED TO ANY THIRD PARTY FOR ANY PURPOSE WHATSOEVER WITHOUT PRIOR WRITTEN CONSENT.



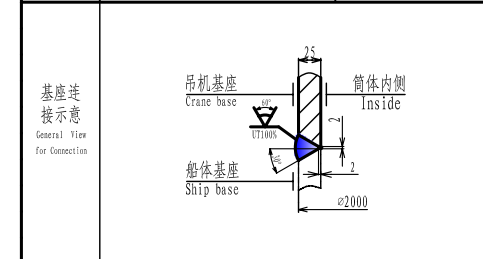
ALLIANZ ARISTON
KINGSTOWN

allianz



技术参数
Technical Data

基本参数 Basic data	安全工作负载 S.W.L.	10t/20m at S.W.H 0.0m	
	工作幅度 Working Range (最大Max.)	20m	
		(最小Min.)	3.5m
	起升高度 Hoisting Height	35m	
	起升速度 Hoisting Speed	20m/min	
	回转速度 Slewing Speed	0 ~ 0.5r/min	
	回转角度 Slewing Sector	360°	
电机参数 Motor data	平均变幅时间 Average Luffing Time	120S	
	钢索规格 SWR SPEC.	32ZA18×19+FC1770ZS	
	电动机 EI-motor (Y315M-4-H)	160kW	
工作条件 Working Condition	电制 EI-duty	415V / 50Hz / 3Ph	
	工作制 Duty	S1 / IP56 / F	
	最大倾角 Max. Heel/Trim	5° / 2°	
	最大风速 Wind Speed	< 20m/S	
搁置条件 Out of service	设计温度 Design temperature	-10°C ~ +45°C	
	环境温度 Ambient temperature	-15°C ~ +45°C	
	区域分类 Area Classification	安全区 Safe Area	
其他 Other	最大横摆/纵摆 Roll/Pitch	30° / 8°	
	最大风速 Wind Speed	< 55m/S	
	操作台位置 Position of Platform	右机型 Right type	
底座连接示意 General View for Connection	推荐冬季用液压油 Suggested oil for winter	L-HS46 (ISO VG46 HS)	
	推荐夏季用液压油 Suggested oil for summer	L-HV46 (ISO VG46 HV)	



甲板受力 Deck Load	最大倾覆力矩 Max. Capsizing Moment	4000 kN·m
	最大回转力矩 Max. Turning Moment	650 kN·m
	最大垂直力 Max. Vertical Force	450 kN
	吊机自重 Dead Weight	~ 30t
外形尺寸 Size of Outline L×W×H		~ 23000×3000×7300

设计
校对
审核
工艺
标准化
会签
批准

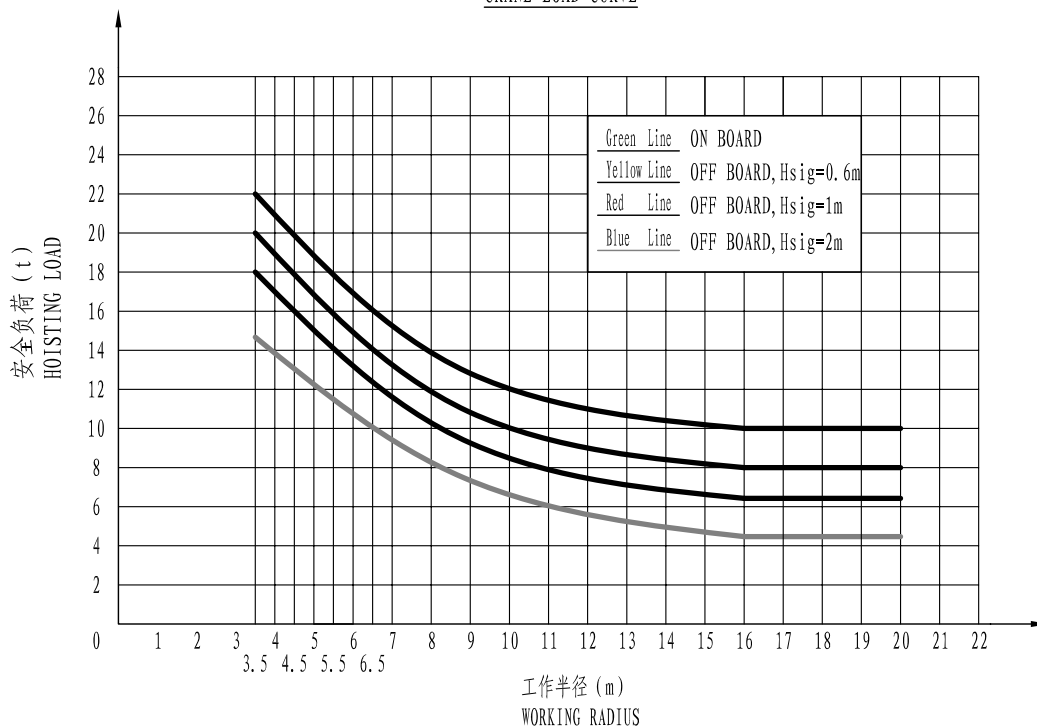
标记	处数	更改文号	签名	日期
设计			标准化	
校对			批准	
审核			会签	
工艺			日期	

总图
GENERAL DWG.

图样标记 重量比例
3000kg 1:1
共 1 页 第 1 页

HTM 江苏海泰船舶成套设备有限公司
JIANGSU HAITAI SHIP'S WHOLE SET CO., LTD.
YQ10/20液压起重机
Hydraulic Crane
242TF10020GM-00

吊机工作负载框图
CRANE LOAD CURVE



- Operational conditions for personnel lift:
No personnel operation available.
- Calculation method:
General method based on API2C, 6th edition.
- Installation: MSV.
- Design service temperature: -15°C - +45°C
- Operation instruction:
Operation in cab by electric joystick.

设计						ZCuAl10Fe3	 江苏海泰船舶成套设备有限公司 JIANGSU HAITAI SHIP'S WHOLE SET CO., LTD.
校对							
审核							
工艺	标记	处数	更改文号	签名	日期	图样标记	YQ10/20液压起重机 Hydraulic Crane
标准化	设计			标准化			
	校对			批准		1.2kg	1:1
会签	审核			会签		242TF10020GM-00	
批准	工艺			日期			